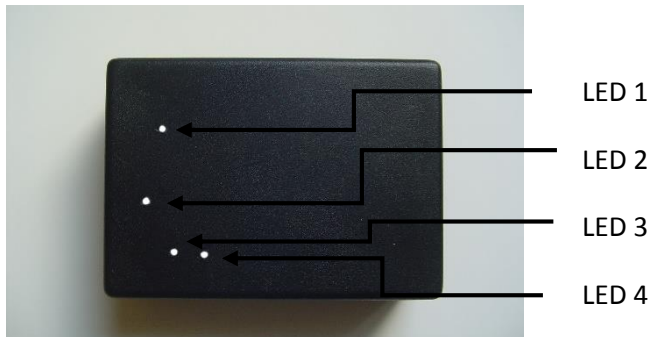


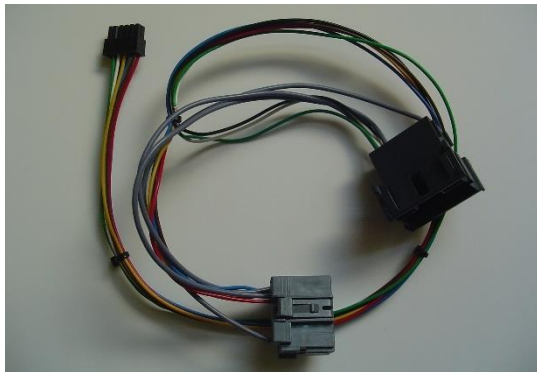
Installation method for a cable with connectors (save mode):

Needed device equipment:

1. Device main module:



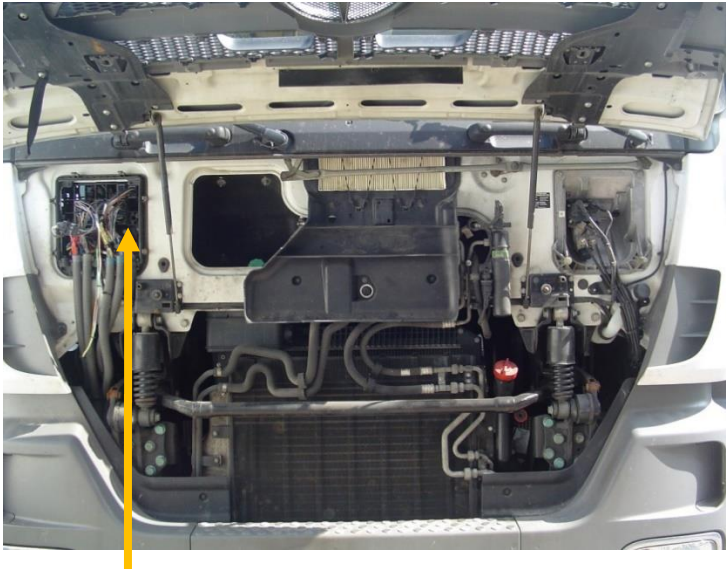
2. Cable with connectors:



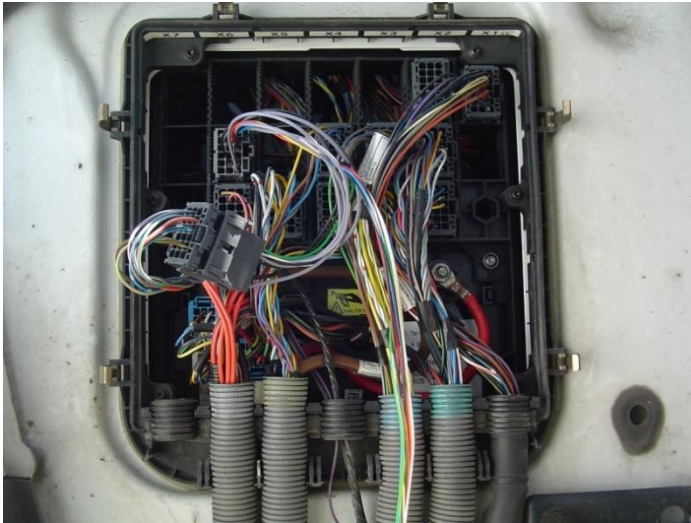
Before installation switch off the engine ignition.

For installation in this way need:

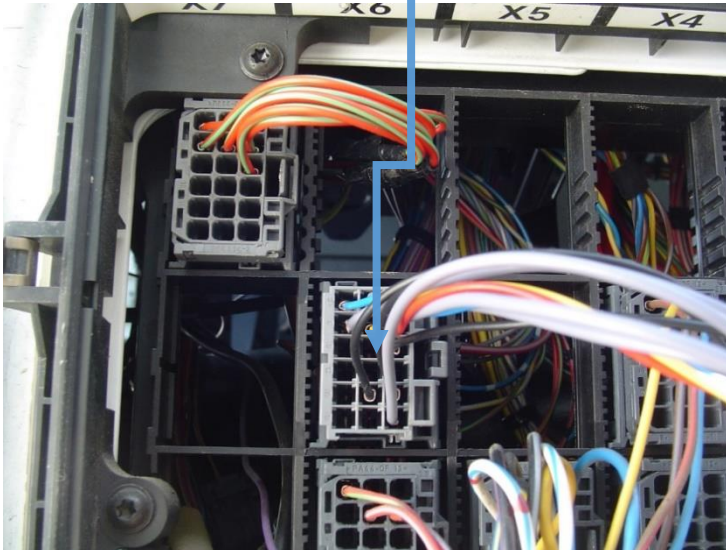
- 1 Open the engine cover



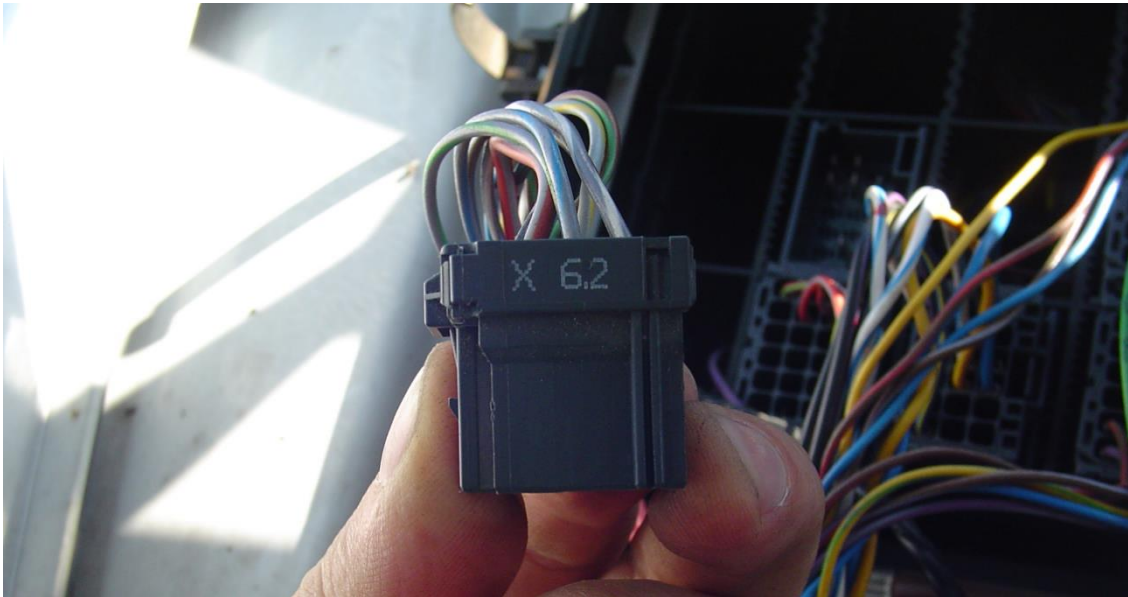
- 2 Open cab-chassis connection box (cable distribution panel) (indicated by arrow)



- 3 Disconnect the connector which is in sixth column of the machine left side (marked X6) and in the second line from the top:



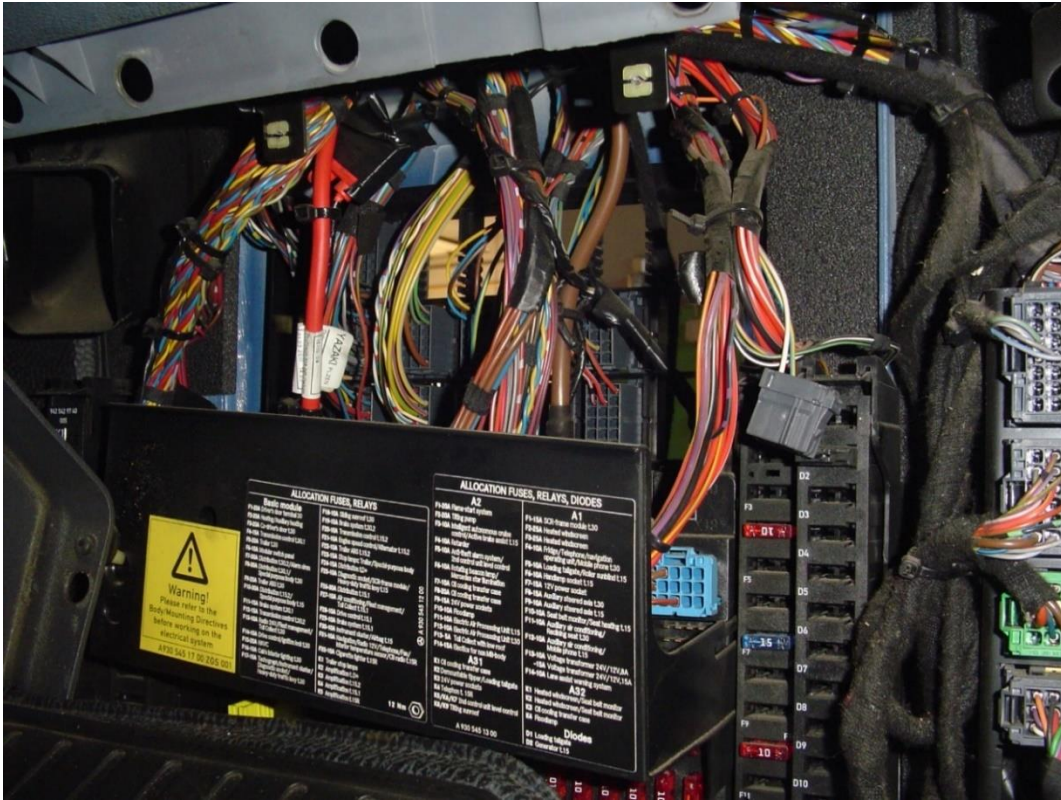
On the connector should be marked X 6.2 (sixth column of the second row):



- 4 The gap are connected with cable connectors: one connector with connector socket, which left in the cab-chassis junction box from the top of the second row and the sixth column and the second connector put in free place in cab-chassis connections box. Connector should place like that the cables from the connector go into the cab, and connected side would be from the front. Then connect with the disconnected connector X6.2. In the photo placed below the device is mounted to the inner cab-chassis junction box side:



In the cab necessary to remove the front panel right side, lower lid:



On this side mount device, one connector from the front of the are connecting, lead it through the hole, and the other connector put in the free place in the second row (cab-chassis connection box, used as a connector bracket).

After installation, check the device work:

LED1 – must flash in blue colour with 50ms interval;

LED2 – unused;

LED3, LED4 – must flash in green colour.

It is advisable to check the SCR system functions using a diagnostic device.

If you notice other LED flashing / lighting options, read the main guide.